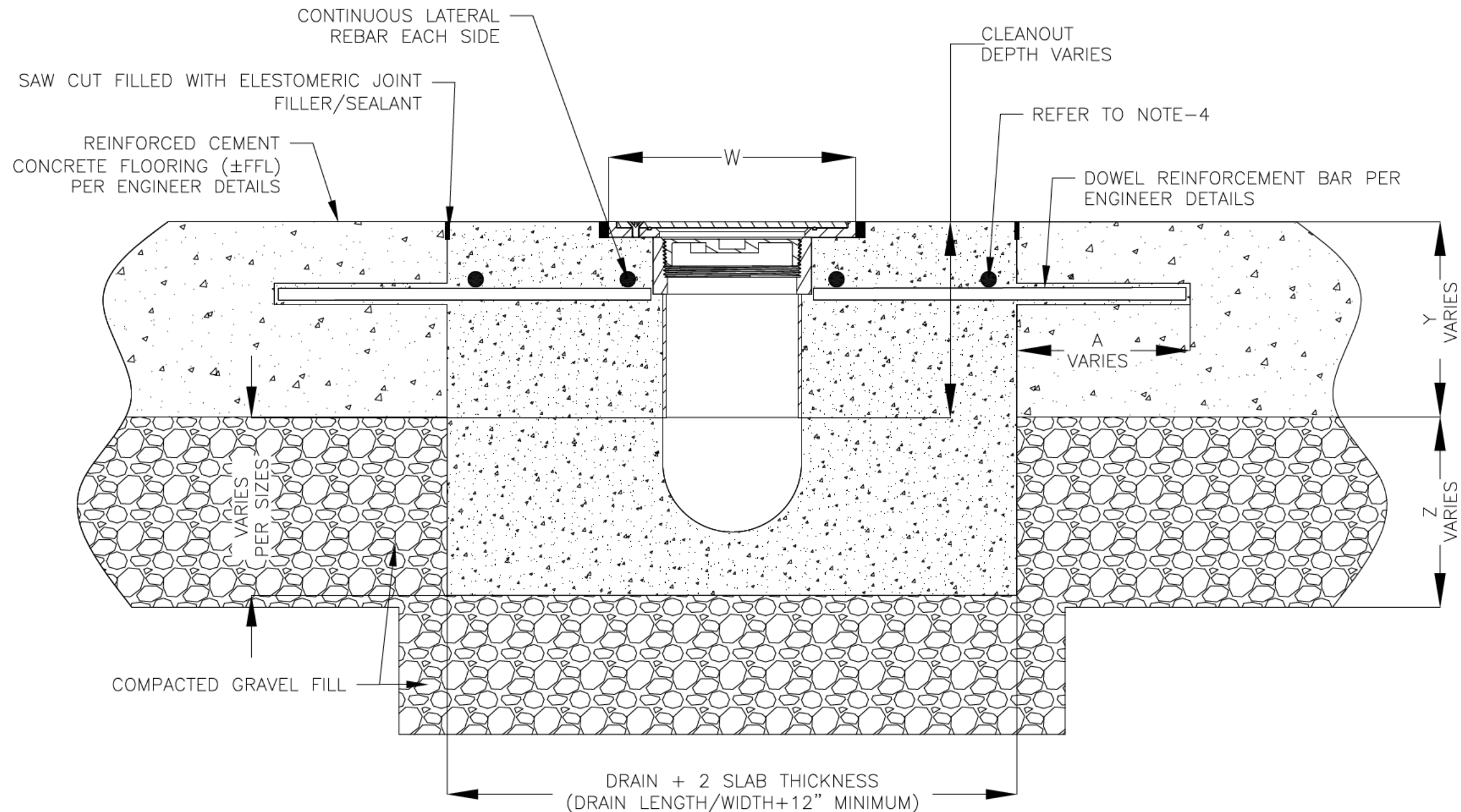


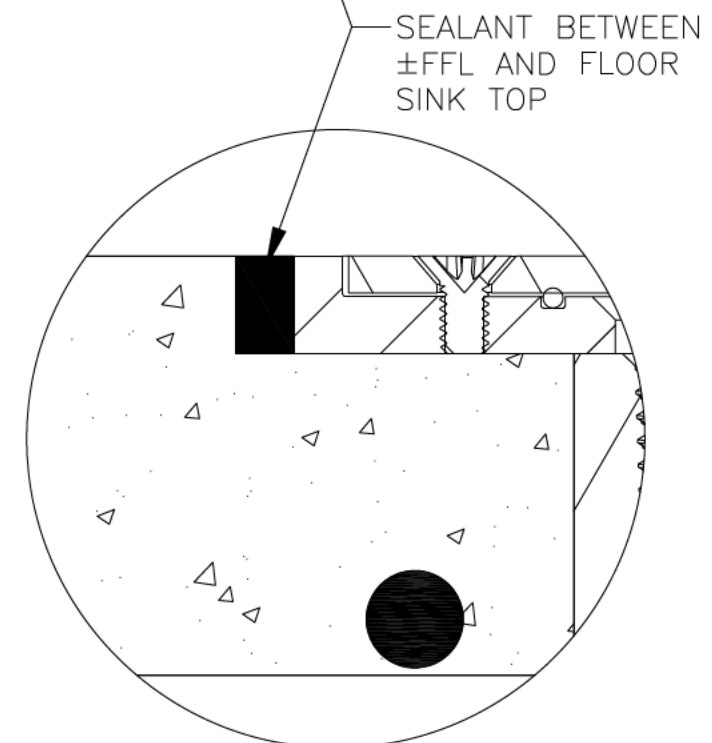
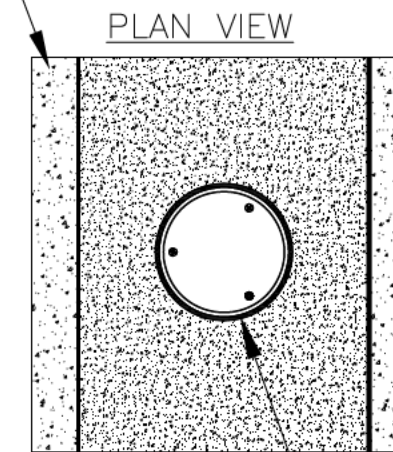
NOTES: UNLESS OTHERWISE SPECIFIED

| REVISIONS | | | |
|-----------|----------------------|----------|----|
| REV | DESCRIPTION | DATE | BY |
| 0 | INITIAL RELEASE - R0 | 5/9/2024 | DK |

1. ALL DIMENSIONS ARE IN INCHES.
2. CLEANOUT MATERIAL: STAINLESS STEEL T304
3. THIS INSTALLATION IS IDENTICAL FOR ALL CLEANOUTS.
4. SPECIFYING ENGINEER IS RESPONSIBLE FOR CONCRETE ENCASEMENT AND REINFORCING BASED UPON APPLICATION AND LOCAL CODES. RECOMMENDED REBAR THICKNESS IS 1/2" DIAMETER.
5. REFER TO <https://info.slotdrainsystems.com/installresources> FOR INSTALLATION INSTRUCTIONS.



REINFORCED CEMENT CONCRETE FLOORING (±FFL) PER ENGINEER DETAILS



DETAIL-A

FOOD SAFE CLEANOUT INSTALLATION DETAILS



| | | | |
|--------------------------------------|------|-------|--------|
| DRAWING TITLE | | | |
| CONCRETE FLOOR-RETROFIT INSTALLATION | | | |
| DRAIN SERIES | | | REV. |
| FOOD SAFE CLEANOUT-FCO | | | 0 |
| DWG NO. | SIZE | SCALE | SHEET |
| IN-FSFCO-101-R0 | B | NTS | 1 OF 1 |

ALL DRAWINGS ARE THE EXCLUSIVE PROPERTY OF SLOT DRAIN SYSTEMS. ANY REPRODUCTION IN PART OR IN WHOLE IS PROHIBITED WITHOUT PROPER CONSENT.