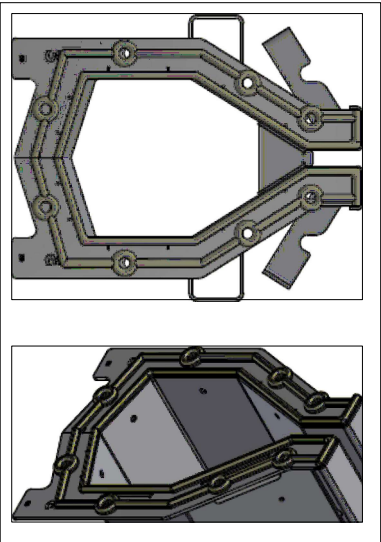


NOTES: UNLESS OTHERWISE SPECIFIED

1. ALL DIMENSIONS ARE IN INCHES.
2. DRAIN BODY MATERIAL: 14GA GALVANIZED/STAINLESS STEEL T304/T316
3. APPLY TWO LAYER OF SILICONE BEAD NEXT TO EACH OTHER AS SHOWN IN THE DETAIL-B.
4. SPECIFYING ENGINEER IS RESPONSIBLE FOR CONCRETE ENCASEMENT AND REINFORCING BASED UPON APPLICATION AND LOCAL CODES.
5. REFER TO <https://info.slotdrainsystems.com/installresources> FOR INSTALLATION INSTRUCTIONS.

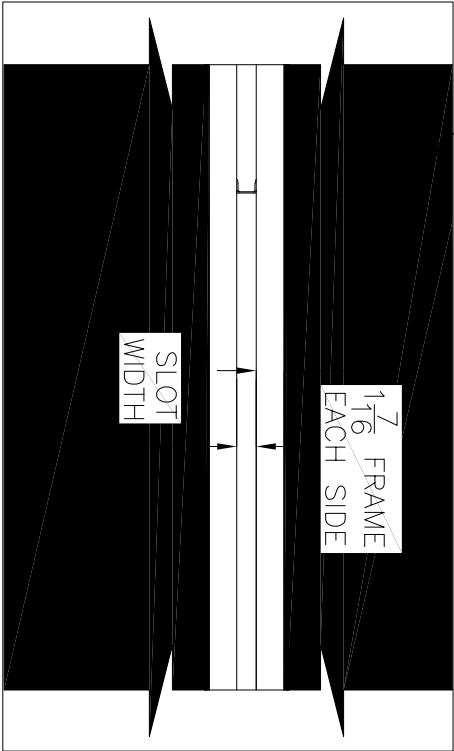


DETAIL-B

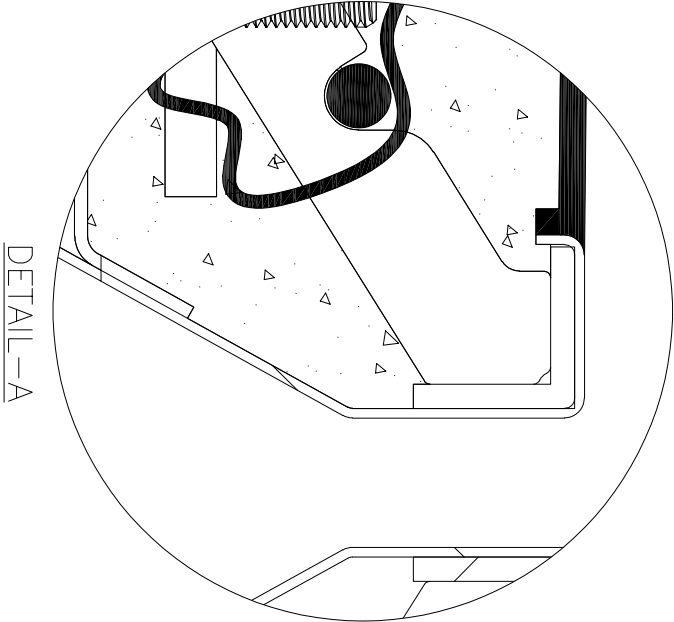
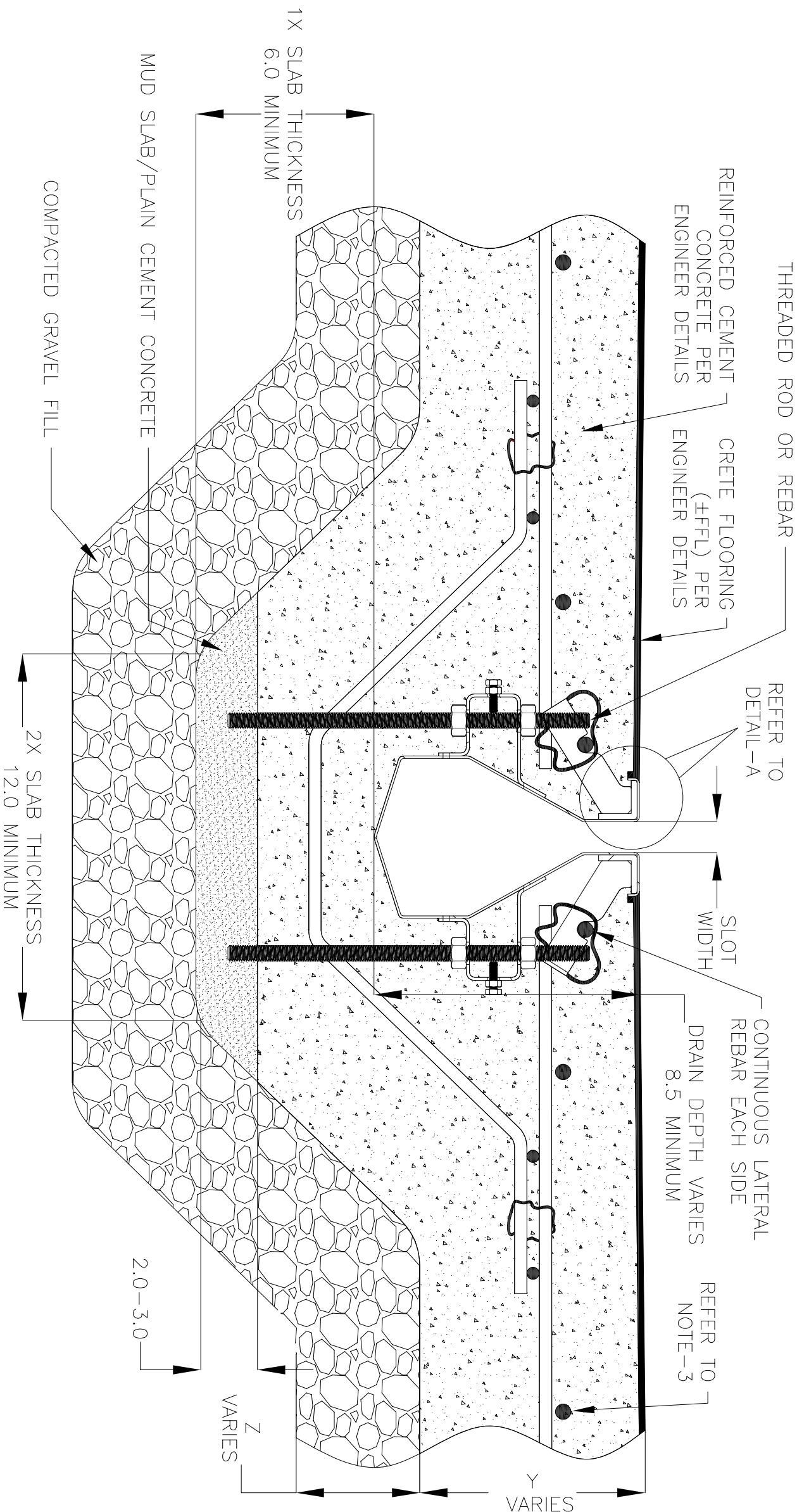
(REFER TO NOTE-3)

CRETE FLOOR (\pm FFL)
PER ENGINEER DETAILS

REVISIONS			DATE	BY
REV	DESCRIPTION			
0	INITIAL RELEASE - R0		1/8/2024	DK
1	UPDATED WITH GLOBAL DRAIN TEMPLATE		3/19/2024	DK
2	UPDATED WITH THE DETAILS ABOUT SILICONE APPLICATION		3/7/2025	DK



PLAN VIEW



DETAIL-A



DRAWING TITLE

CRETE FLOOR-NEW CONSTRUCTION INSTALLATION

DRAIN SERIES

8000 SERIES SLOT DRAIN

REV.

2

DWG NO.

IN-SD8000-001-R2

SIZE

B

SCALE

NTS

SHEET

1 OF 1

8000 SERIES SLOT DRAIN INSTALLATION DETAILS