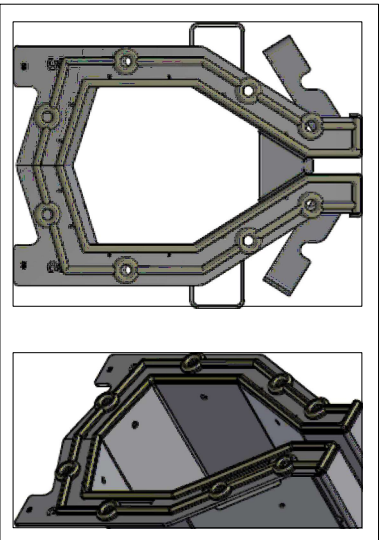


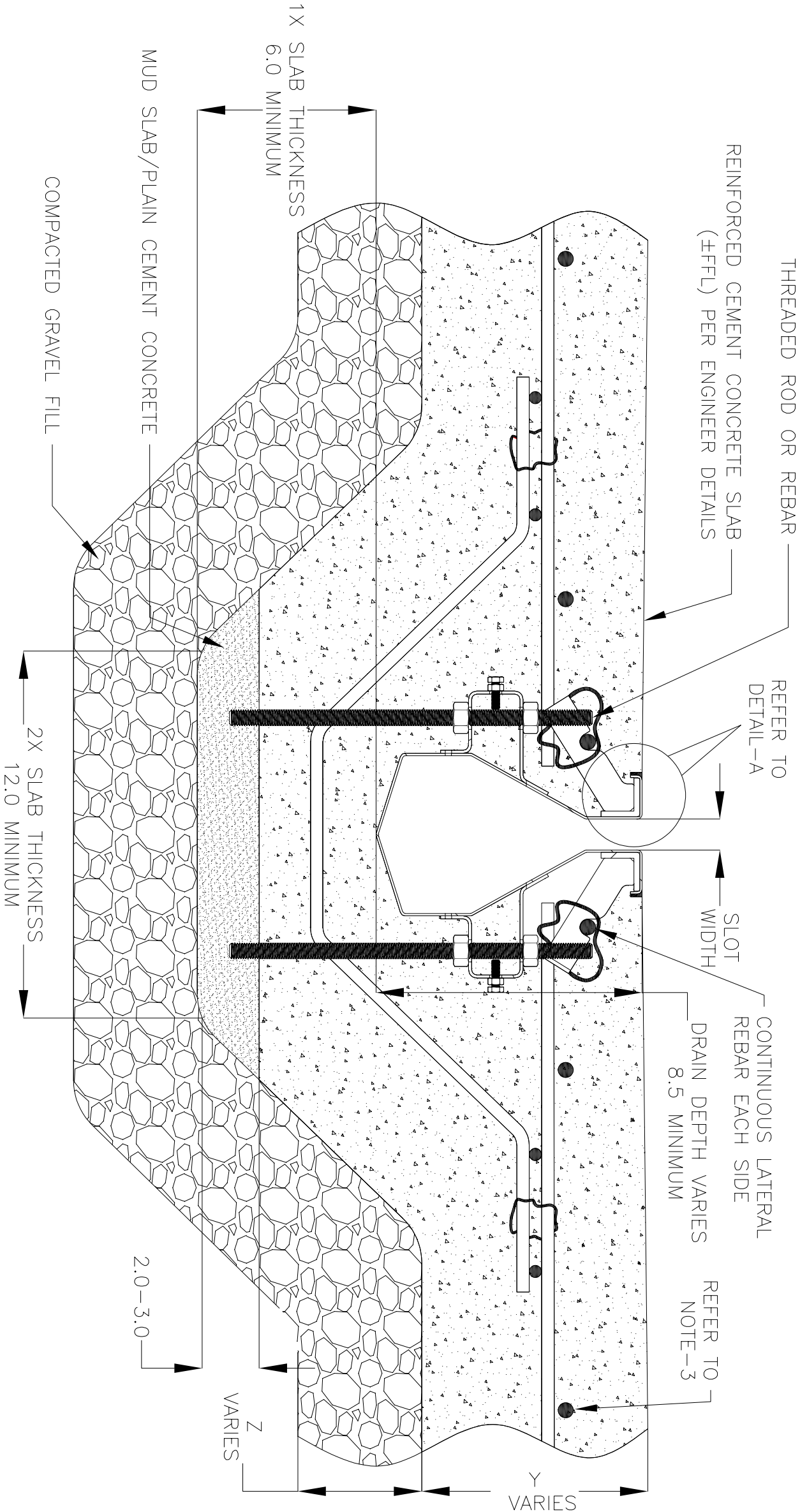
NOTES: UNLESS OTHERWISE SPECIFIED

1. ALL DIMENSIONS ARE IN INCHES.
2. DRAIN BODY MATERIAL: 14GA GALVANIZED/STAINLESS STEEL T304/T316
3. APPLY TWO LAYER OF SILICONE BEAD NEXT TO EACH OTHER AS SHOWN IN THE DETAIL-B.
4. SPECIFYING ENGINEER IS RESPONSIBLE FOR CONCRETE ENCASEMENT AND REINFORCING BASED UPON APPLICATION AND LOCAL CODES.
5. REFER TO <https://info.slotdrainsystems.com/installresources> FOR INSTALLATION INSTRUCTIONS.

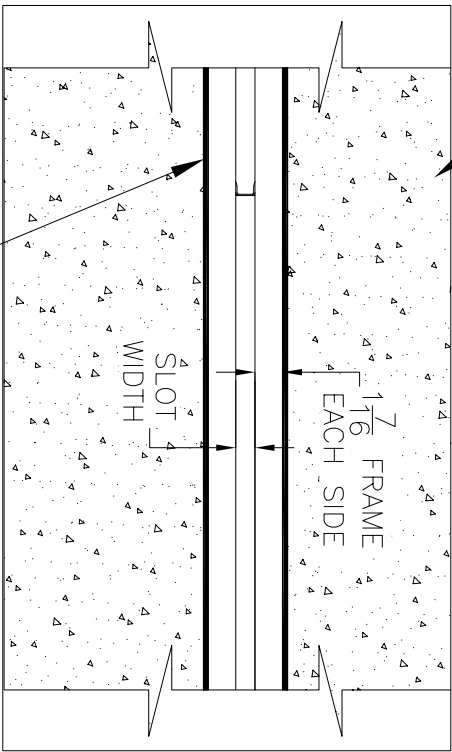


DETAIL-B

(REFER TO NOTE-3)

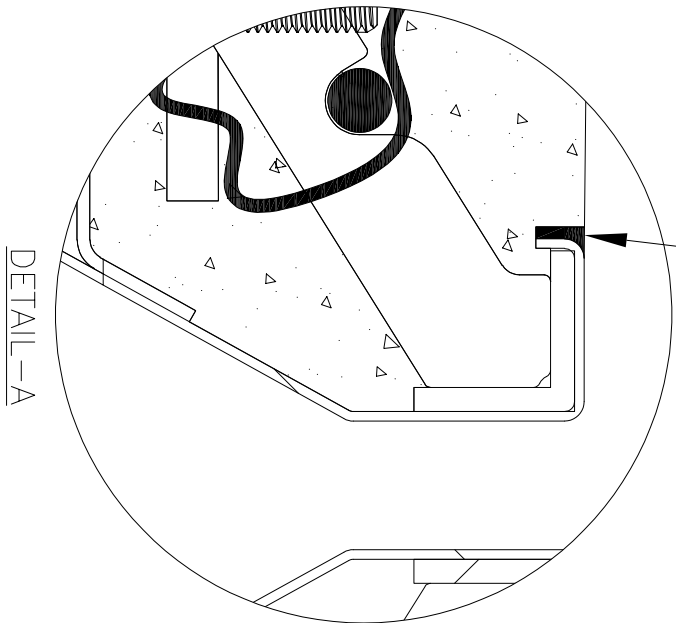


REINFORCED CEMENT
CONCRETE SLAB (±FFL)
PER ENGINEER DETAILS



PLAN VIEW

SEALANT BETWEEN ±FFL
AND DRAIN TOP LVL



DETAIL-A



DRAWING TITLE

CONCRETE FLOOR-NEW CONSTRUCTION INSTALLATION

REVISIONS				REV	DESCRIPTION	DATE	BY
				0	INITIAL RELEASE - RO	1/8/2024	DK
				1	UPDATED WITH GLOBAL DRAIN TEMPLATE	3/19/2024	DK
				2	UPDATED WITH THE DETAILS ABOUT SILICONE APPLICATION	3/7/2025	DK

DRAIN SERIES				REV.
8000 SERIES SLOT DRAIN				2
DWG NO.	SIZE	SCALE	SHEET	
IN-SD8000-003-R2	B	NTS	1 OF 1	

ALL DRAWINGS ARE THE EXCLUSIVE PROPERTY OF SLOT DRAIN SYSTEMS. ANY REPRODUCTION IN PART OR IN WHOLE IS PROHIBITED WITHOUT PROPER CONSENT.

8000 SERIES SLOT DRAIN INSTALLATION DETAILS