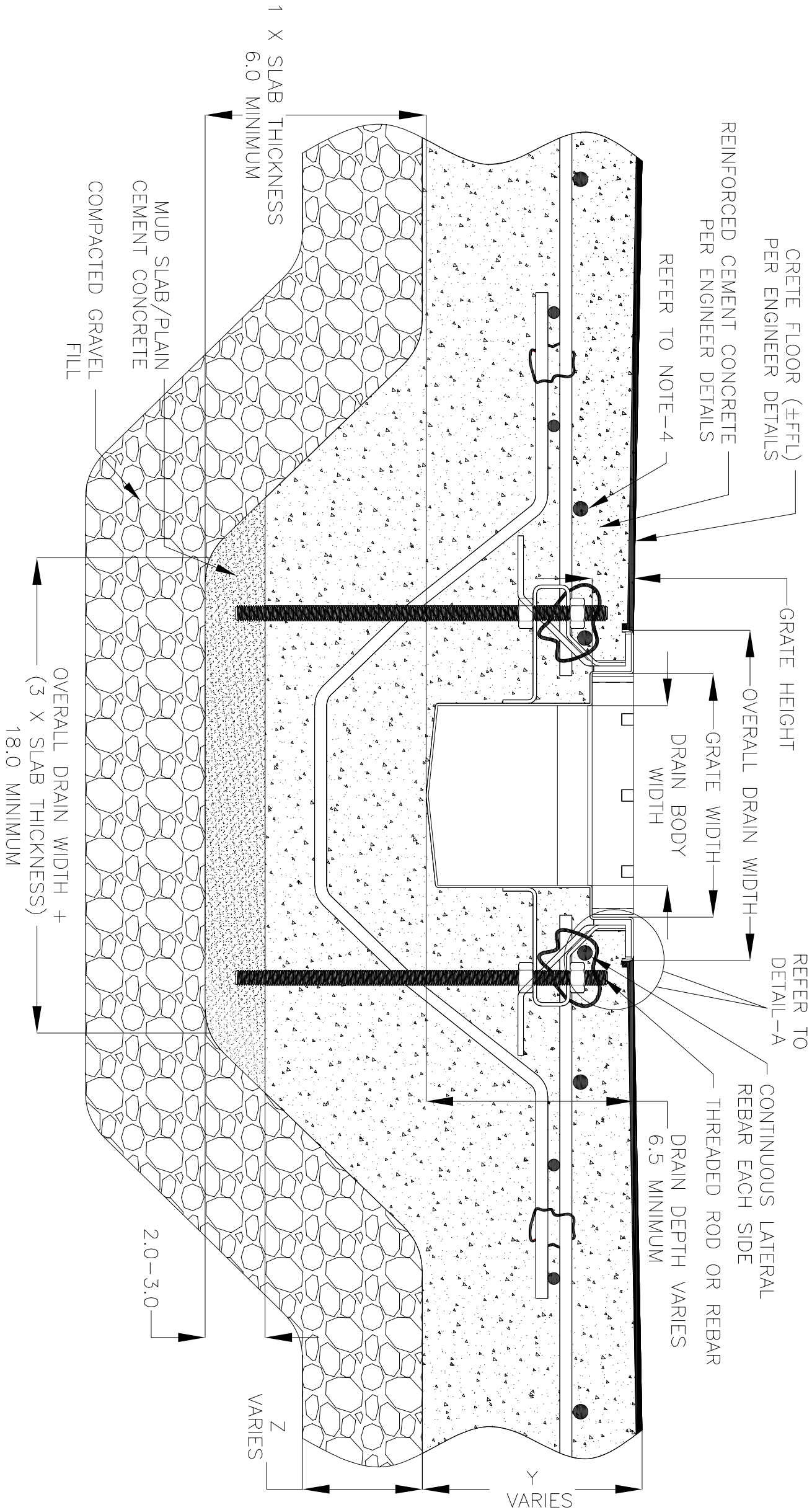


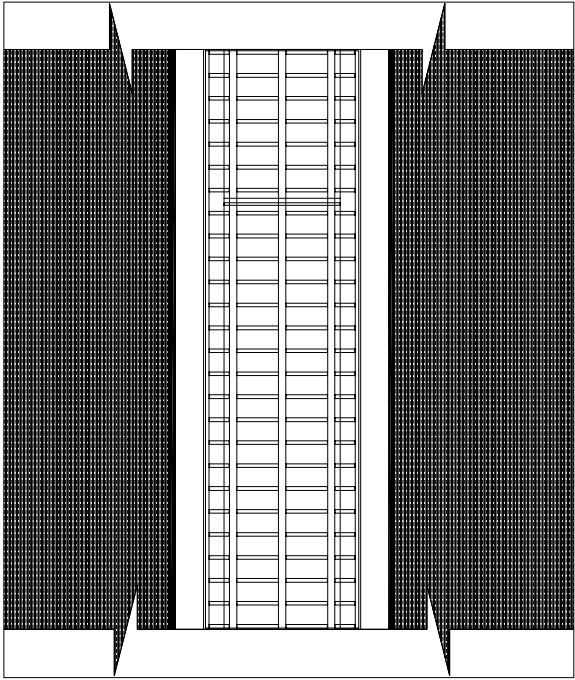
NOTES: UNLESS OTHERWISE SPECIFIED

1. ALL DIMENSIONS ARE IN INCHES.
2. DRAIN BODY MATERIAL: 14GA STAINLESS STEEL T304/T316
3. GRATING: PLAIN/SERRATED BAR GRATING, UPTO 'E' LOAD CLASS AVAILABLE
4. SPECIFYING ENGINEER IS RESPONSIBLE FOR CONCRETE ENCASEMENT AND REINFORCING BASED UPON APPLICATION AND LOCAL CODES.
5. REFER TO <https://info.slotdrainsystems.com/installresources> FOR INSTALLATION INSTRUCTIONS.

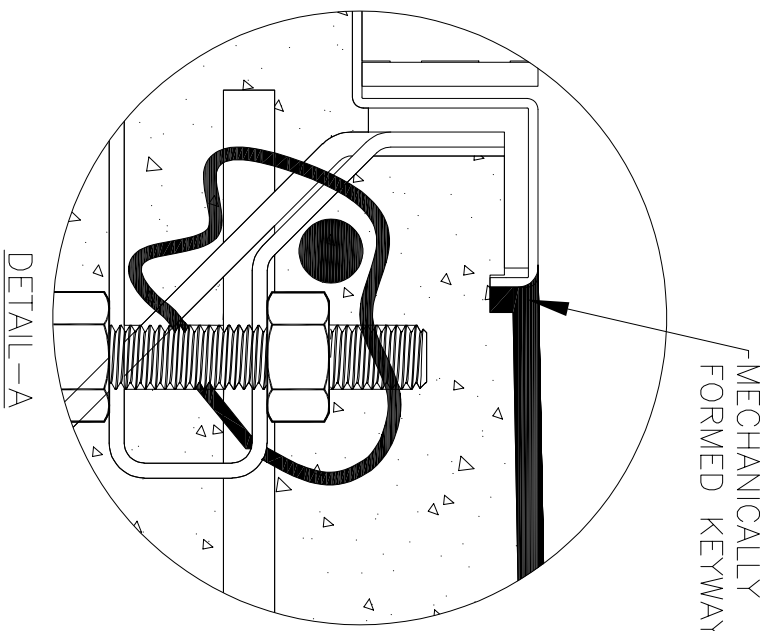


CRETE FLOOR ( $\pm$ FFL)  
PER ENGINEER DETAILS

REVISIONS			
REV	DESCRIPTION	DATE	BY
0	INITIAL RELEASE – R0	2/3/2020	DK
1	UPDATED DRAIN LAYOUT & REBAR DETAILS	9/14/2021	DK
2	UPDATED WITH GLOBAL DRAIN TEMPLATE	5/24/2024	DK



## PLAN VIEW



DETAIL-A

# FOOD SAFE 'V' BOTTOM TRENCH DRAIN INSTALLATION DETAILS



**GLOBAL DRAIN**  
TECHNOLOGIES

CRETE FLOOR-NEW CONSTRUCTION INSTALLATION

ALL DRAWINGS ARE THE EXCLUSIVE  
PROPERTY OF SLOT DRAIN SYSTEMS  
ANY REPRODUCTION IN PART OR IN  
WHOLE IS PROHIBITED WITHOUT  
PROPER CONSENT.

DRAIN SERIES		REV.
FOOD SAFE 'V' BOTTOM TRENCH DRAIN		2
DWG NO.	SIZE	SHEET
IN-FTV-001-R2	B	1 OF 1