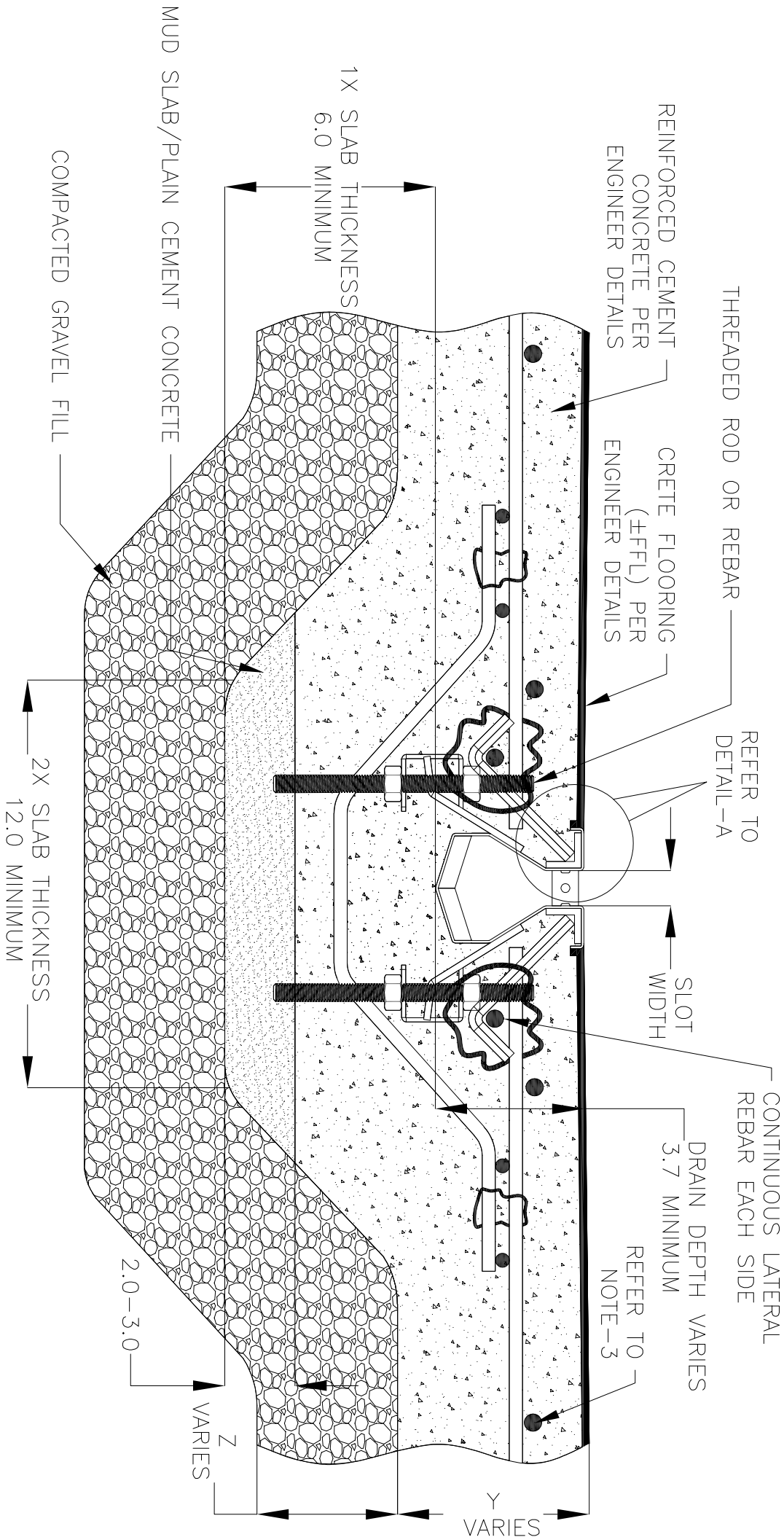


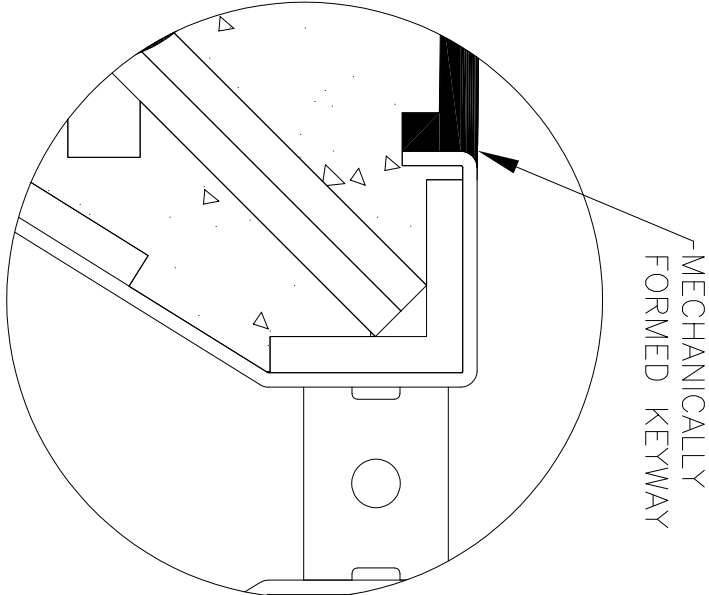
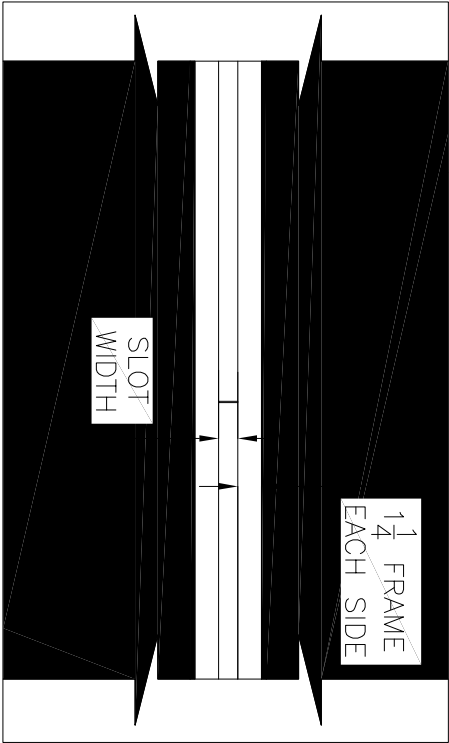
NOTES: UNLESS OTHERWISE SPECIFIED

1. ALL DIMENSIONS ARE IN INCHES.
2. DRAIN BODY MATERIAL: 14GA STAINLESS STEEL T304/T316
3. SPECIFYING ENGINEER IS RESPONSIBLE FOR CONCRETE ENCASEMENT AND REINFORCING BASED UPON APPLICATION AND LOCAL CODES.
4. REFER TO <https://info.slotdrainsystems.com/installresources> FOR INSTALLATION INSTRUCTIONS.



6000PR SERIES SLOT DRAIN INSTALLATION DETAILS

CRETE FLOORING (±FFL)
PER ENGINEER DETAILS



DETAIL-A

REVISIONS		
REV	DESCRIPTION	DATE
0	INITIAL RELEASE - RO	11/15/2019
1	UPDATED THE REBAR DETAILS	7/14/2021
2	UPDATED WITH GLOBAL DRAIN TEMPLATE	3/19/2024



DRAWING TITLE

CRETE FLOOR-NEW CONSTRUCTION INSTALLATION

DRAIN SERIES

6000PR SERIES SLOT DRAIN

REV.
2

DWG NO.

IN-SD6000PR-001-R2

SIZE

B

SCALE

NTS

SHEET

1 OF

1

ALL DRAWINGS ARE THE EXCLUSIVE PROPERTY OF SLOT DRAIN SYSTEMS. ANY REPRODUCTION IN PART OR IN WHOLE IS PROHIBITED WITHOUT PROPER CONSENT.