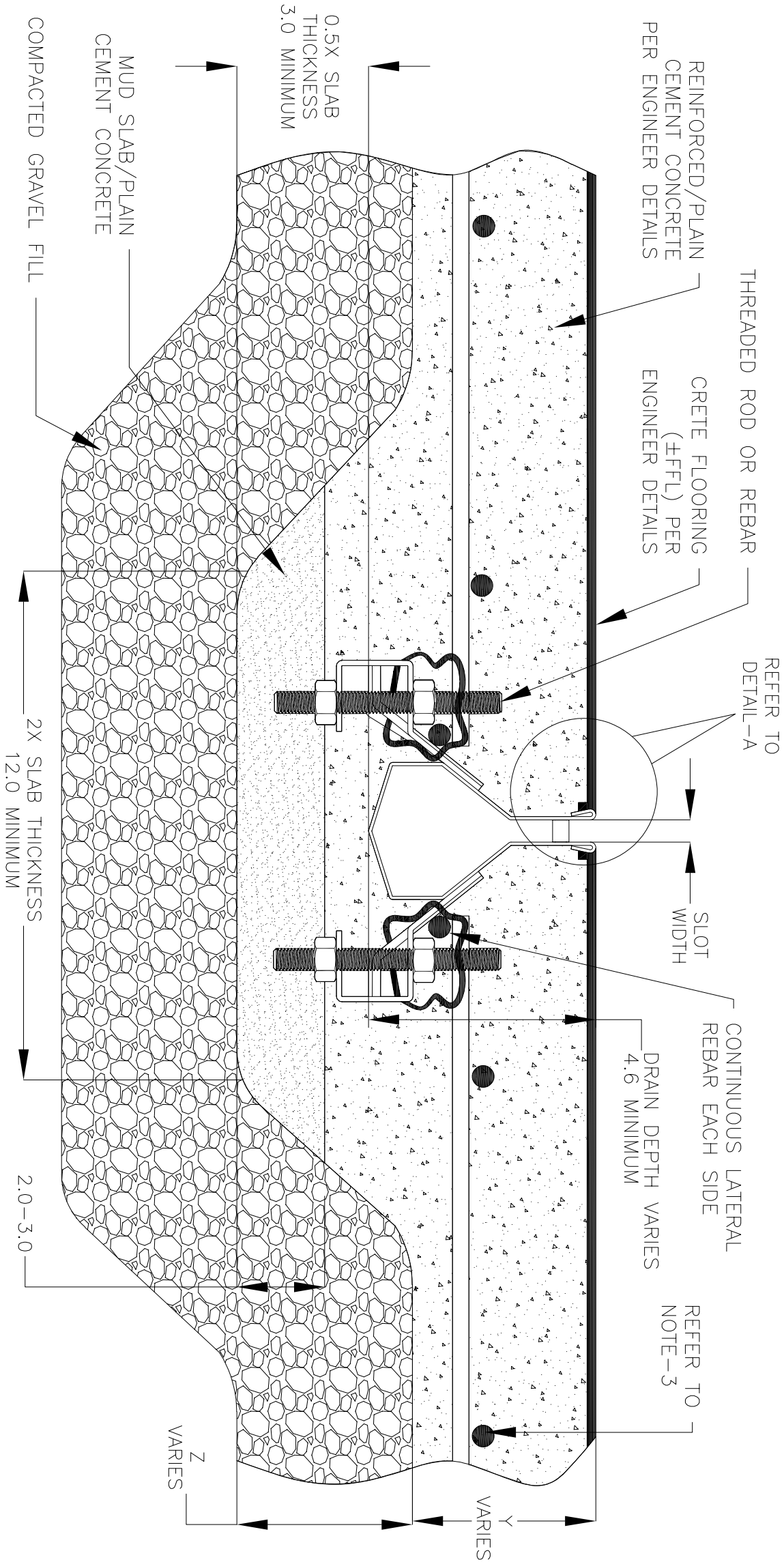


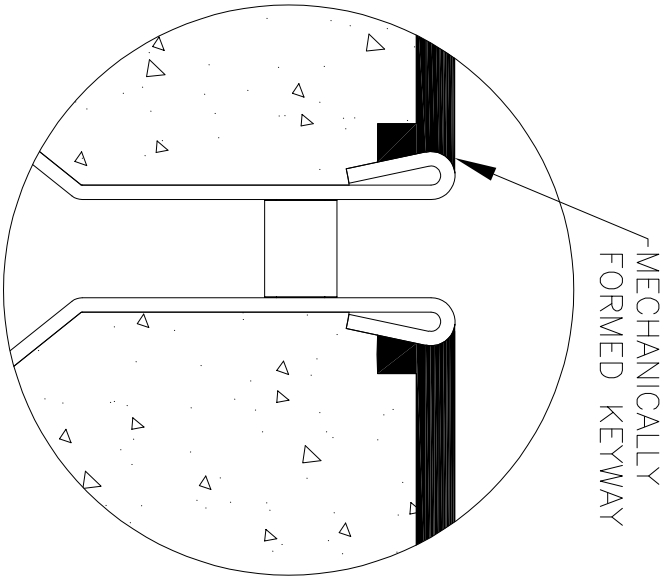
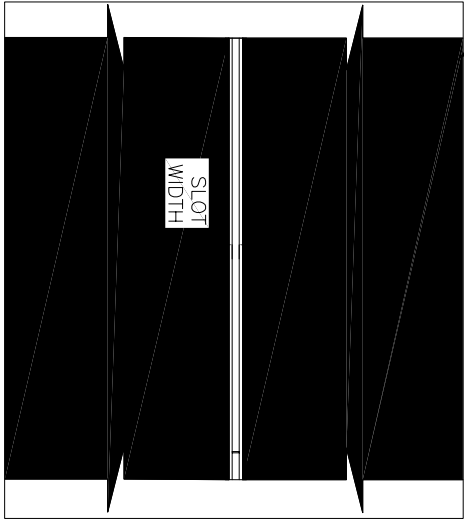
NOTES: UNLESS OTHERWISE SPECIFIED

1. ALL DIMENSIONS ARE IN INCHES.
2. DRAIN BODY MATERIAL: 16GA STAINLESS STEEL T304/T316
3. SPECIFYING ENGINEER IS RESPONSIBLE FOR CONCRETE ENCASEMENT AND REINFORCING BASED UPON APPLICATION AND LOCAL CODES.
4. REFER TO <https://info.slotdrainsystems.com/installresources> FOR INSTALLATION INSTRUCTIONS.



7000N SERIES SLOT DRAIN INSTALLATION DETAILS

CRETE FLOORING (±FFL)
PER ENGINEER DETAILS



DRAWING TITLE

CRETE FLOOR-NEW CONSTRUCTION INSTALLATION

DRAIN SERIES

7000N SERIES SLOT DRAIN

REV.
3

DWG NO.

IN-SD7000N-001-R3

SIZE
B

SCALE
NTS

SHEET
1 OF 1

ALL DRAWINGS ARE THE EXCLUSIVE
PROPERTY OF SLOT DRAIN SYSTEMS.
ANY REPRODUCTION IN PART OR IN
WHOLE IS PROHIBITED WITHOUT
PROPER CONSENT.

REVISIONS			DATE	BY
REV	DESCRIPTION			
0	INITIAL RELEASE - RO	4/26/2019	DK	
1	UPDATED THE DRAIN LAYOUT	12/2/2020	DK	
2	UPDATED THE DRAIN & REBAR DETAILS	7/14/2021	DK	
3	UPDATED WITH GLOBAL DRAIN TEMPLATE	3/19/2024	DK	