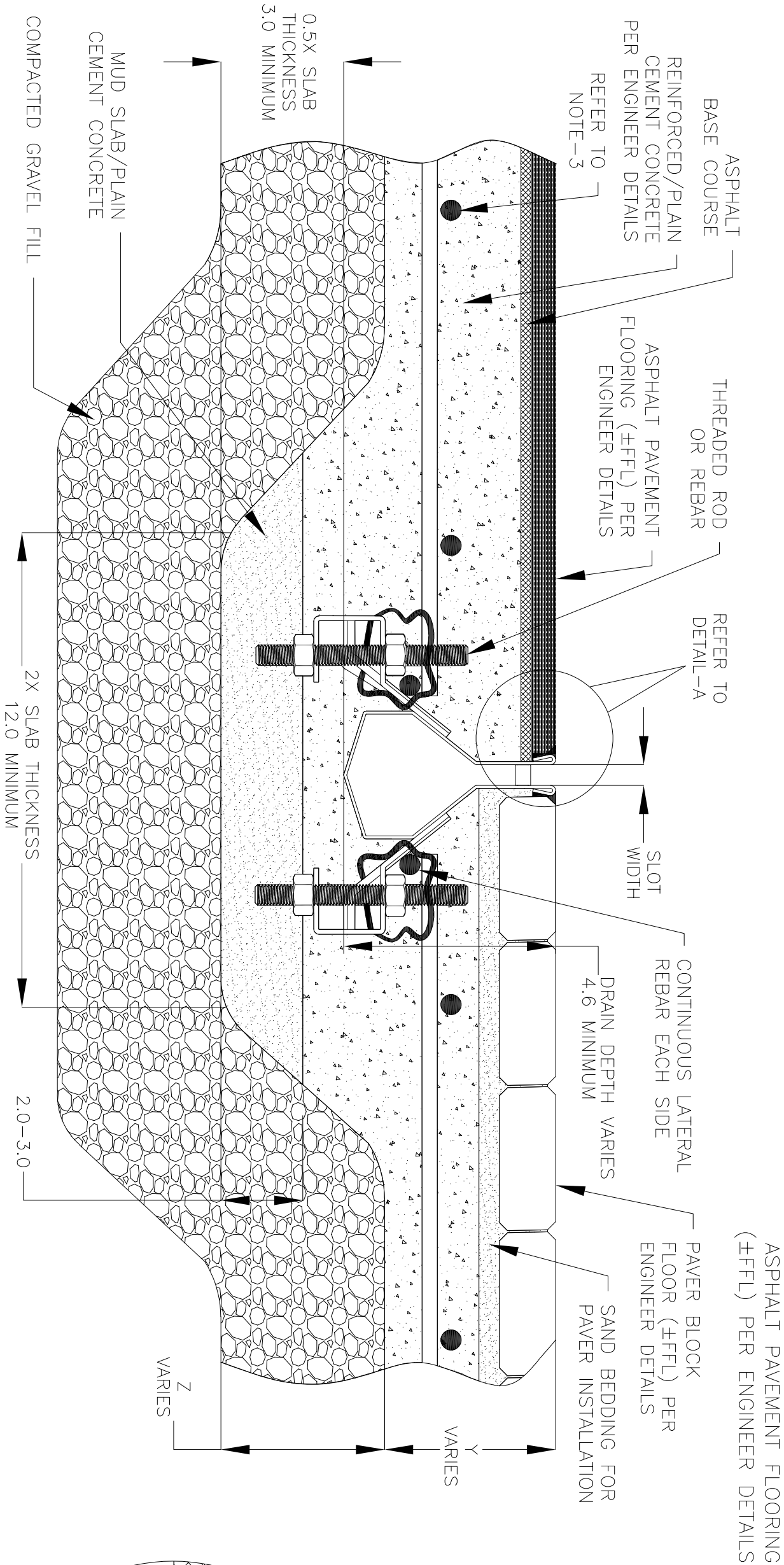


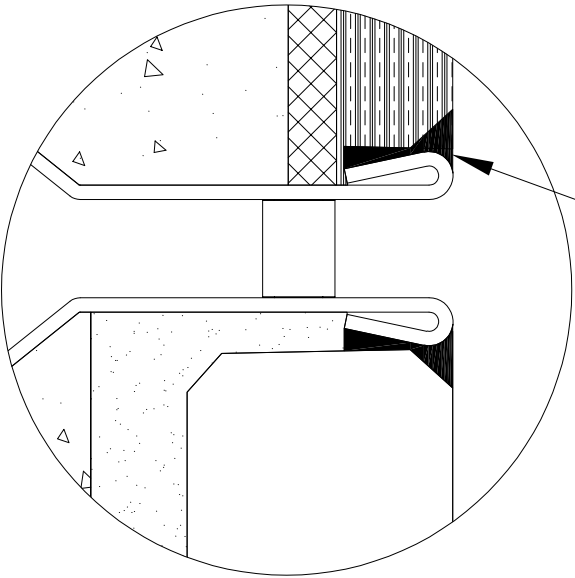
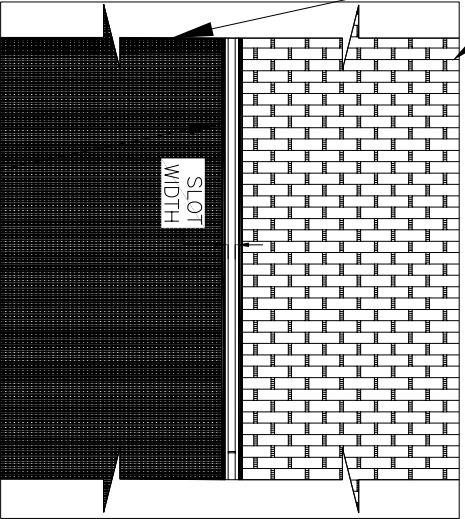
NOTES: UNLESS OTHERWISE SPECIFIED

1. ALL DIMENSIONS ARE IN INCHES.
2. DRAIN BODY MATERIAL: 16GA STAINLESS STEEL T304/T316
3. SPECIFYING ENGINEER IS RESPONSIBLE FOR CONCRETE ENCASEMENT AND REINFORCING BASED UPON APPLICATION AND LOCAL CODES.
4. REFER TO <https://info.slotdrainsystems.com/installresources> FOR INSTALLATION INSTRUCTIONS.



PAVER BLOCK FLOORING (±FFL) PER ENGINEER DETAILS

ASPHALT PAVEMENT FLOORING (±FFL) PER ENGINEER DETAILS



7000N SERIES SLOT DRAIN INSTALLATION DETAILS

REVISIONS			DATE	BY
REV	DESCRIPTION			
0	INITIAL RELEASE - RO		4/26/2019	DK
1	UPDATED THE DRAIN LAYOUT		12/2/2020	DK
2	UPDATED THE DRAIN & REBAR DETAILS		7/14/2021	DK
3	UPDATED WITH GLOBAL DRAIN TEMPLATE		3/19/2024	DK



DRAWING TITLE

PAVER+ASPHALT FLOOR-NEW CONSTRUCTION INSTALLATION

DRAIN SERIES			REV.
7000N SERIES SLOT DRAIN			3
DWG NO.	SIZE	SCALE	SHEET
IN-SD7000N-005-R3	B	NTS	1 OF 1

ALL DRAWINGS ARE THE EXCLUSIVE PROPERTY OF SLOT DRAIN SYSTEMS. ANY REPRODUCTION IN PART OR IN WHOLE IS PROHIBITED WITHOUT PROPER CONSENT.