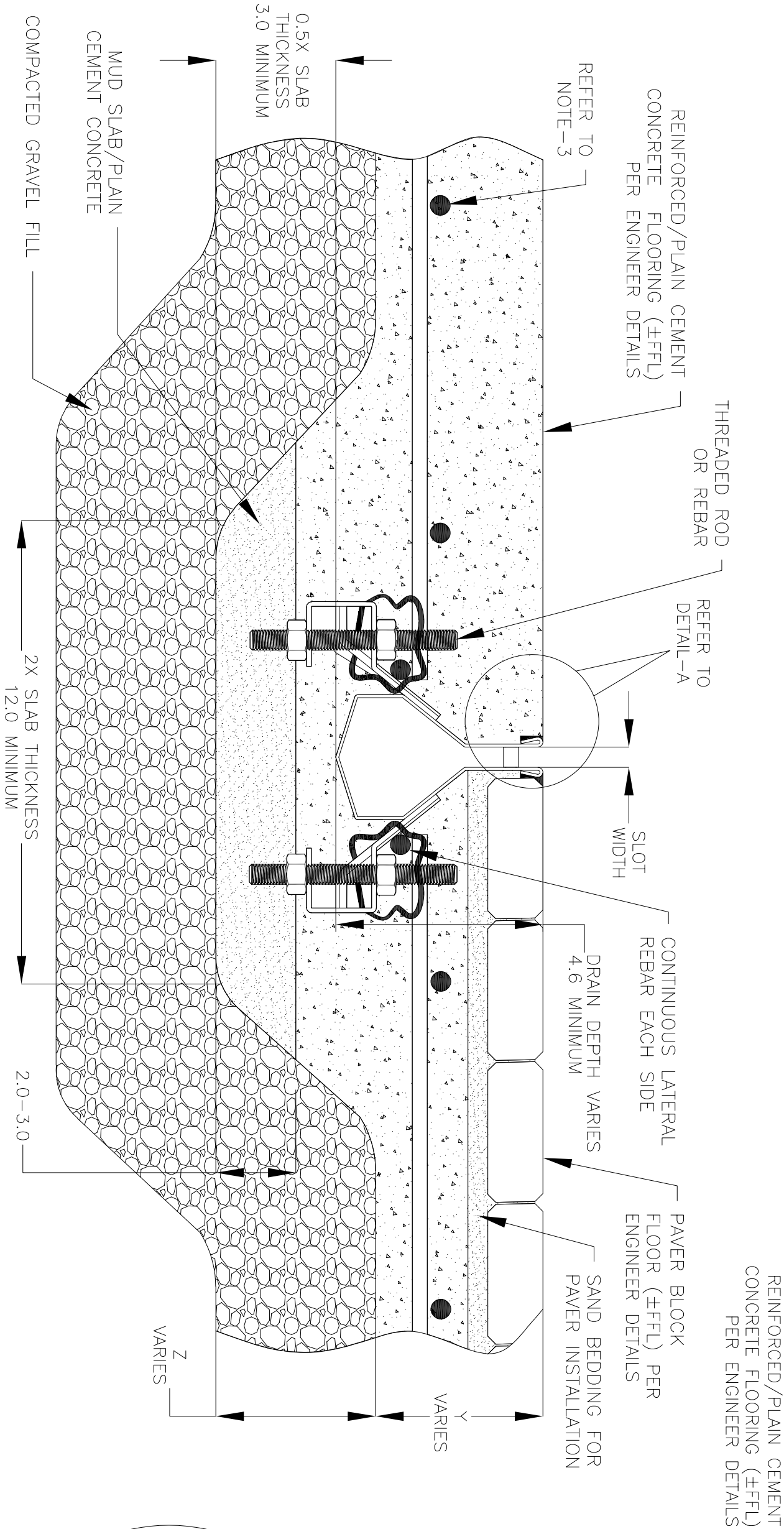
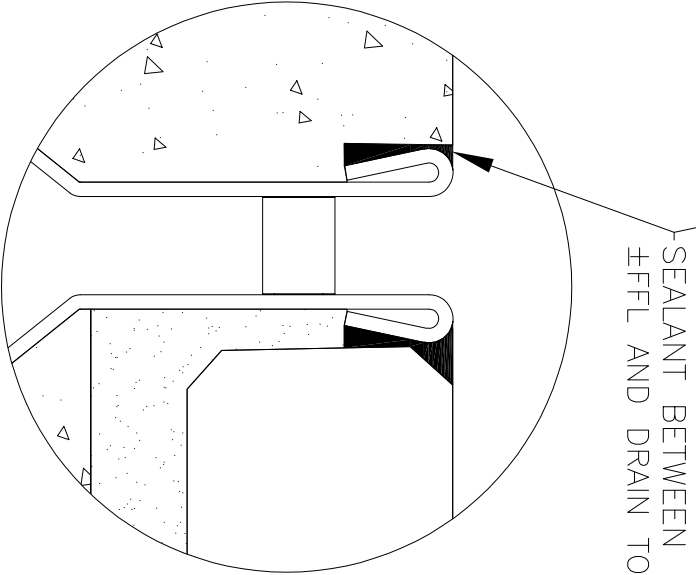
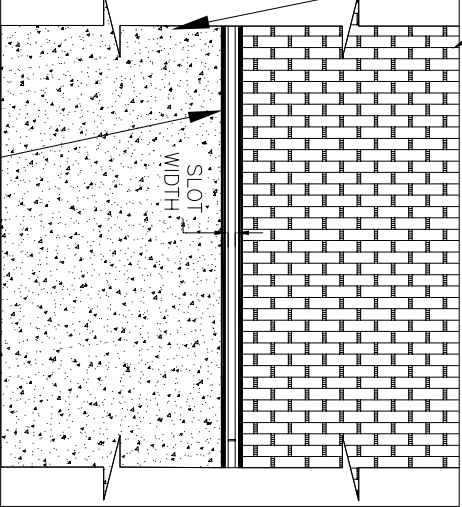


NOTES: UNLESS OTHERWISE SPECIFIED

1. ALL DIMENSIONS ARE IN INCHES.
2. DRAIN BODY MATERIAL: 16GA STAINLESS STEEL T304/T316
3. SPECIFYING ENGINEER IS RESPONSIBLE FOR CONCRETE ENCASEMENT AND REINFORCING BASED UPON APPLICATION AND LOCAL CODES.
4. REFER TO <https://info.slotdrainsystems.com/installresources> FOR INSTALLATION INSTRUCTIONS.



REVISIONS		
REV	DESCRIPTION	DATE
0	INITIAL RELEASE - RO	4/26/2019
1	UPDATED THE DRAIN LAYOUT	12/2/2020
2	UPDATED THE DRAIN & REBAR DETAILS	7/14/2021
3	UPDATED WITH GLOBAL DRAIN TEMPLATE	3/19/2024



7000N SERIES SLOT DRAIN INSTALLATION DETAILS

DETAIL-A



DRAWING TITLE

PAVER+CONCRETE FLOOR-NEW CONSTRUCTION INSTALLATION

DRAIN SERIES			
7000N SERIES SLOT DRAIN			REV. 3
DWG NO.	SIZE	SCALE	SHEET
IN-SD7000N-006-R3	B	NTS	1 OF 1

ALL DRAWINGS ARE THE EXCLUSIVE PROPERTY OF SLOT DRAIN SYSTEMS. ANY REPRODUCTION IN PART OR IN WHOLE IS PROHIBITED WITHOUT PROPER CONSENT.