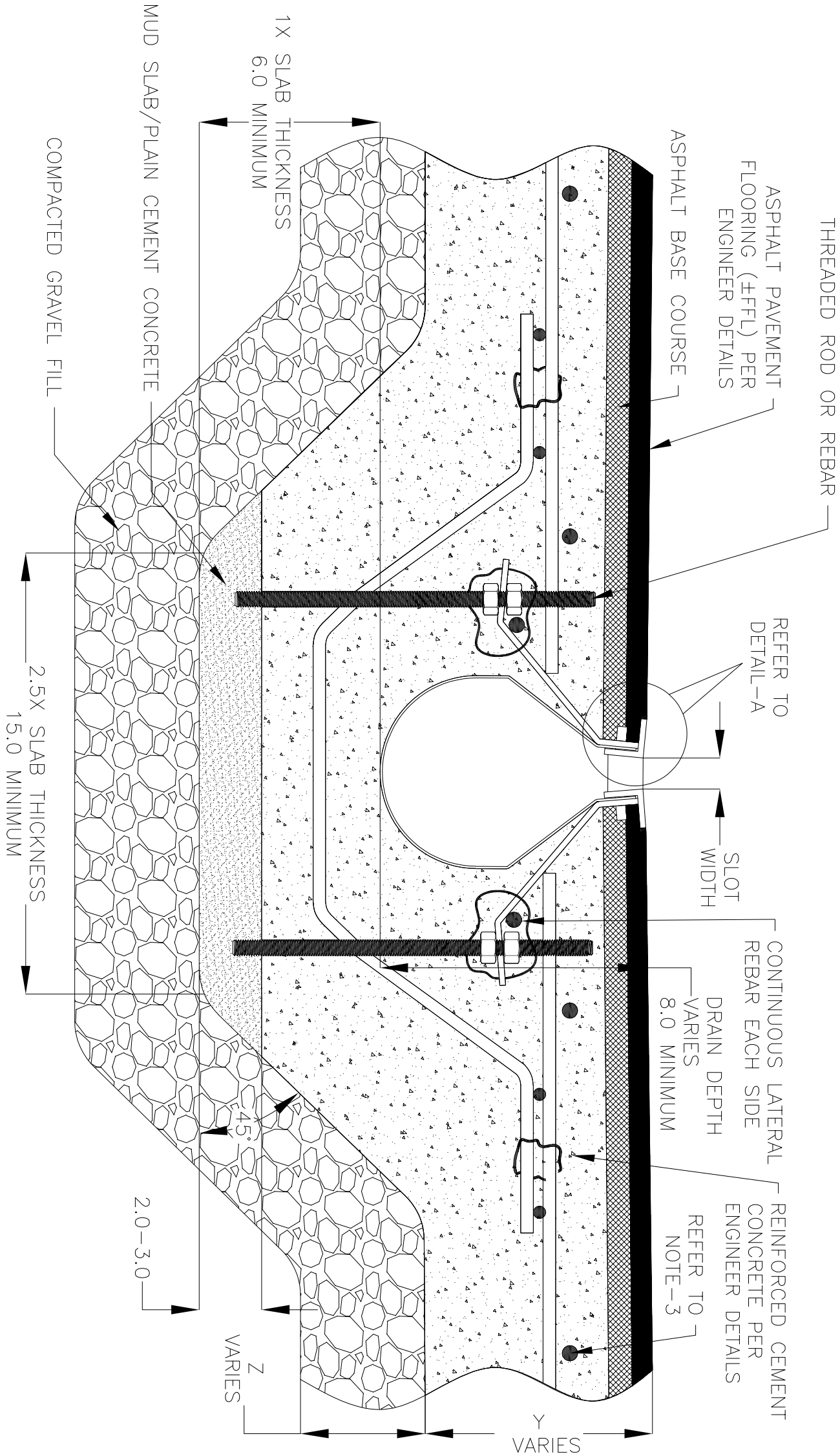
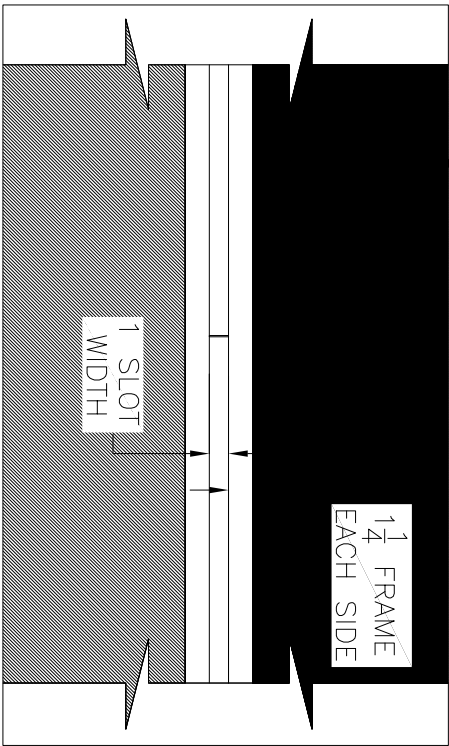


NOTES: UNLESS OTHERWISE SPECIFIED

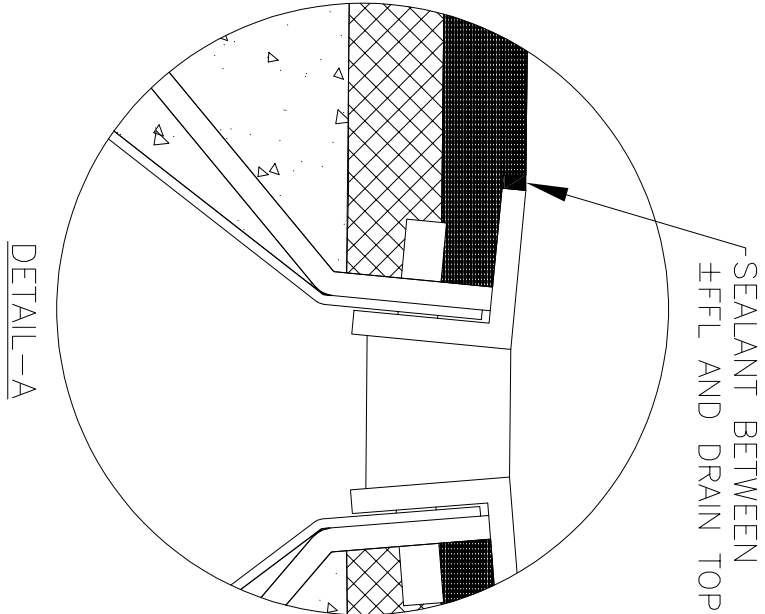
1. ALL DIMENSIONS ARE IN INCHES.
2. DRAIN BODY MATERIAL: 14GA STAINLESS STEEL T304/T316/GS
3. SPECIFYING ENGINEER IS RESPONSIBLE FOR CONCRETE ENCASEMENT AND REINFORCING BASED UPON APPLICATION AND LOCAL CODES.
4. REFER TO <https://info.slotdrainsystems.com/installresources> FOR INSTALLATION INSTRUCTIONS.



ASPHALT PAVEMENT  
FLOORING (±FFL) PER  
ENGINEER DETAILS



PLAN VIEW



DETAIL-A

9000 SERIES SLOT DRAIN INSTALLATION DETAILS

DRAWING TITLE  
ASPHALT FLOOR-NEW CONSTRUCTION INSTALLATION

DRAIN SERIES  
9000 SERIES SLOT DRAIN

REV.  
3

ALL DRAWINGS ARE THE EXCLUSIVE PROPERTY OF SLOT DRAIN SYSTEMS. ANY REPRODUCTION IN PART OR IN WHOLE IS PROHIBITED WITHOUT PROPER CONSENT.

DWG NO.  
IN-SD9000-002-R3

SIZE  
B

SCALE  
NTS

SHEET  
1 OF 1