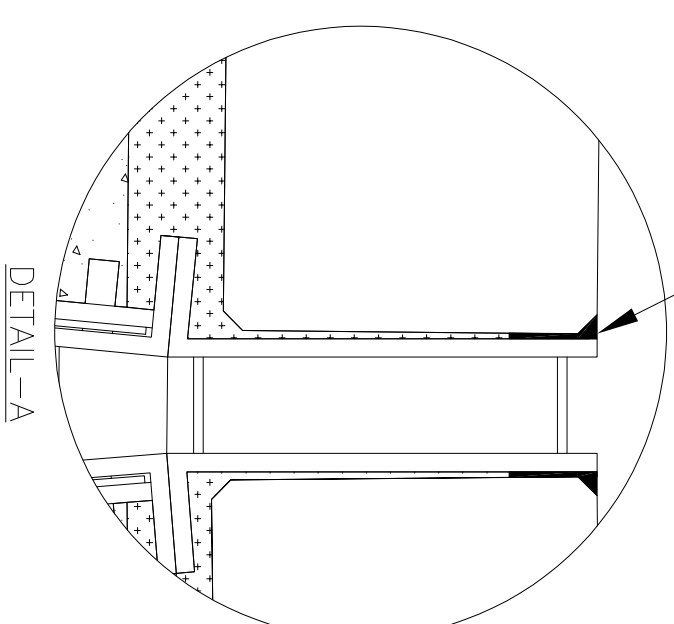


1. ALL DIMENSIONS ARE IN INCHES.
2. DRAIN BODY MATERIAL: 14GA STAINLESS STEEL T304/T316/GS
3. SPECIFYING ENGINEER IS RESPONSIBLE FOR CONCRETE ENCASEMENT AND REINFORCING BASED UPON APPLICATION AND LOCAL CODES.
4. REFER TO <https://info.sloidrainsystems.com/installresources> FOR INSTALLATION INSTRUCTIONS.



—SEALANT BETWEEN AFFL AND DRAIN TOP LVL



GLOBAL DRAIN
TECHNOLOGIES

9000 SERIES SLOT DRAIN INSTALLATION DETAILS

ALL DRAWINGS ARE THE EXCLUSIVE
PROPERTY OF SLOT DRAIN SYSTEMS.
ANY REPRODUCTION IN PART OR IN
WHOLE IS PROHIBITED WITHOUT
PROPER CONSENT.

DRAIN SERIES	REV.		
9000 SERIES SLOT DRAIN-EXTENSION OF SLOT	3		
DWG. NO.	SIZE	SCALE	SHEET
IN-SD9000-004-R3	B	NTS	1 OF 1