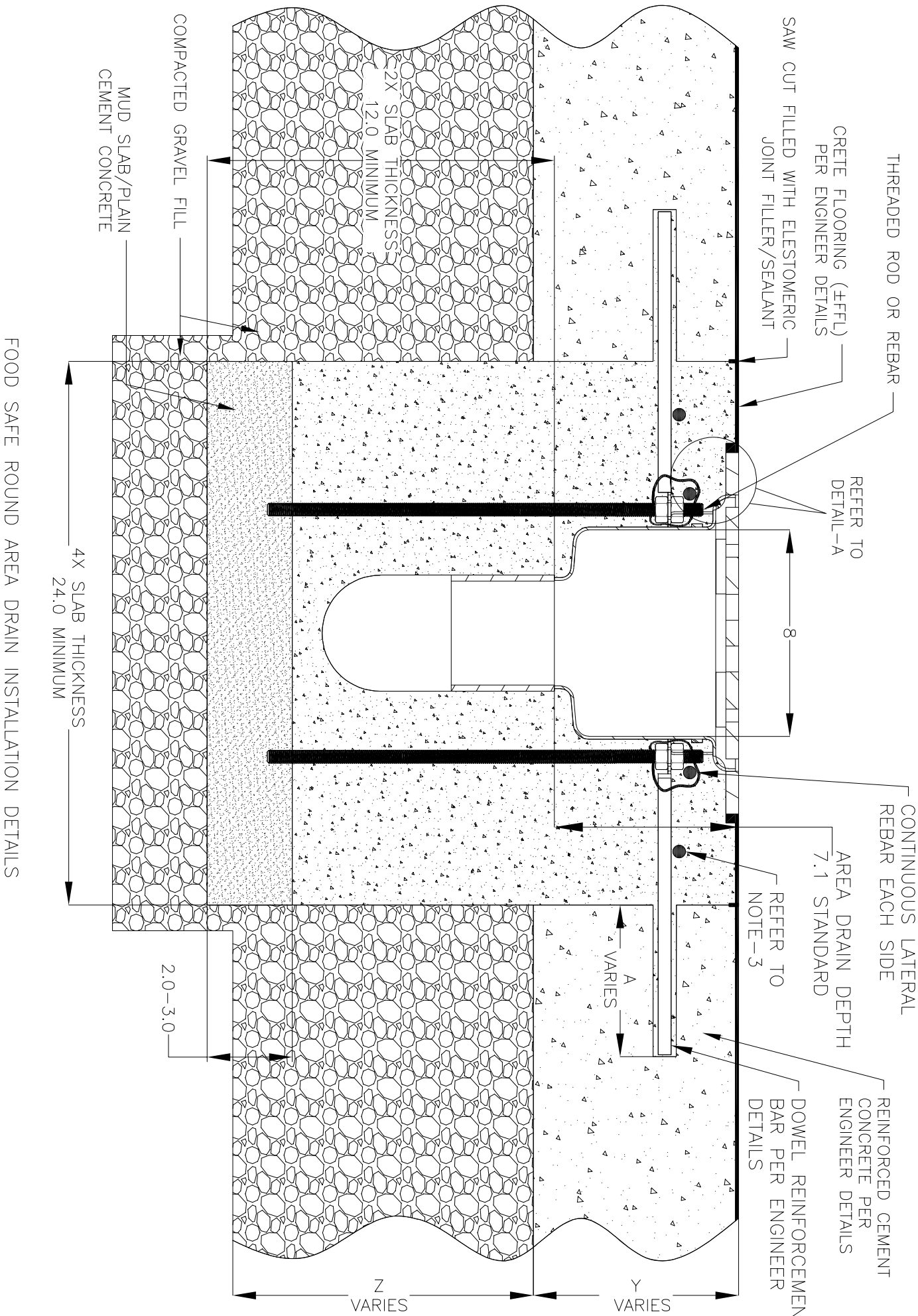
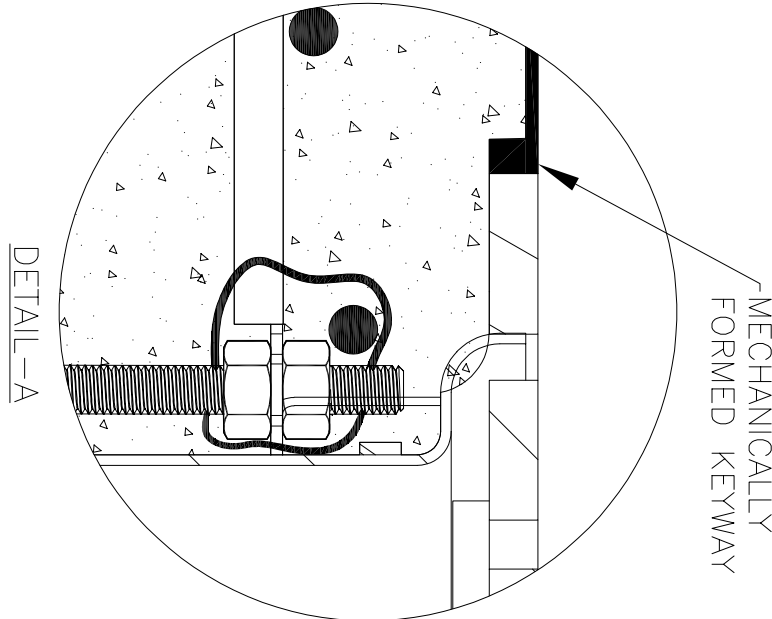
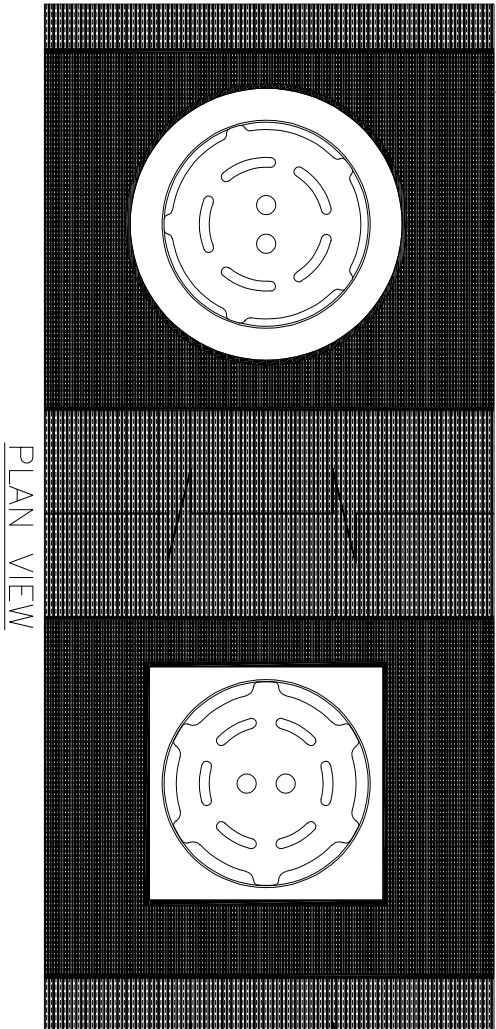


NOTES: UNLESS OTHERWISE SPECIFIED

1. ALL DIMENSIONS ARE IN INCHES.
2. AREA DRAIN BODY MATERIAL: 12GA STAINLESS STEEL T316
3. SPECIFYING ENGINEER IS RESPONSIBLE FOR CONCRETE ENCASEMENT AND REINFORCING BASED UPON APPLICATION AND LOCAL CODES.
4. REFER TO <https://info.slotdrainsystems.com/installresources> FOR INSTALLATION INSTRUCTIONS.



CRETE FLOORING (±FFL)
PER ENGINEER DETAILS



FOOD SAFE ROUND AREA DRAIN INSTALLATION DETAILS

REVISIONS			DATE	BY
REV	DESCRIPTION			
0	INITIAL RELEASE - R0		4/15/2020	DK
1	UPDATED DRAWING LAYOUT & REBAR DETAILS		7/14/2021	DK
2	UPDATED WITH GLOBAL DRAIN TEMPLATE		8/21/2024	DK

DRAWING TITLE				
CRETE FLOOR-RETROFIT INSTALLATION				
DRAIN SERIES				REV.
FOOD SAFE ROUND AREA DRAIN				2
DWG NO.	SIZE	SCALE	SHEET	
IN-FSAD-0101-R2	B	NTS	1	OF 1

ALL DRAWINGS ARE THE EXCLUSIVE PROPERTY OF SLOT DRAIN SYSTEMS. ANY REPRODUCTION IN PART OR IN WHOLE IS PROHIBITED WITHOUT PROPER CONSENT.