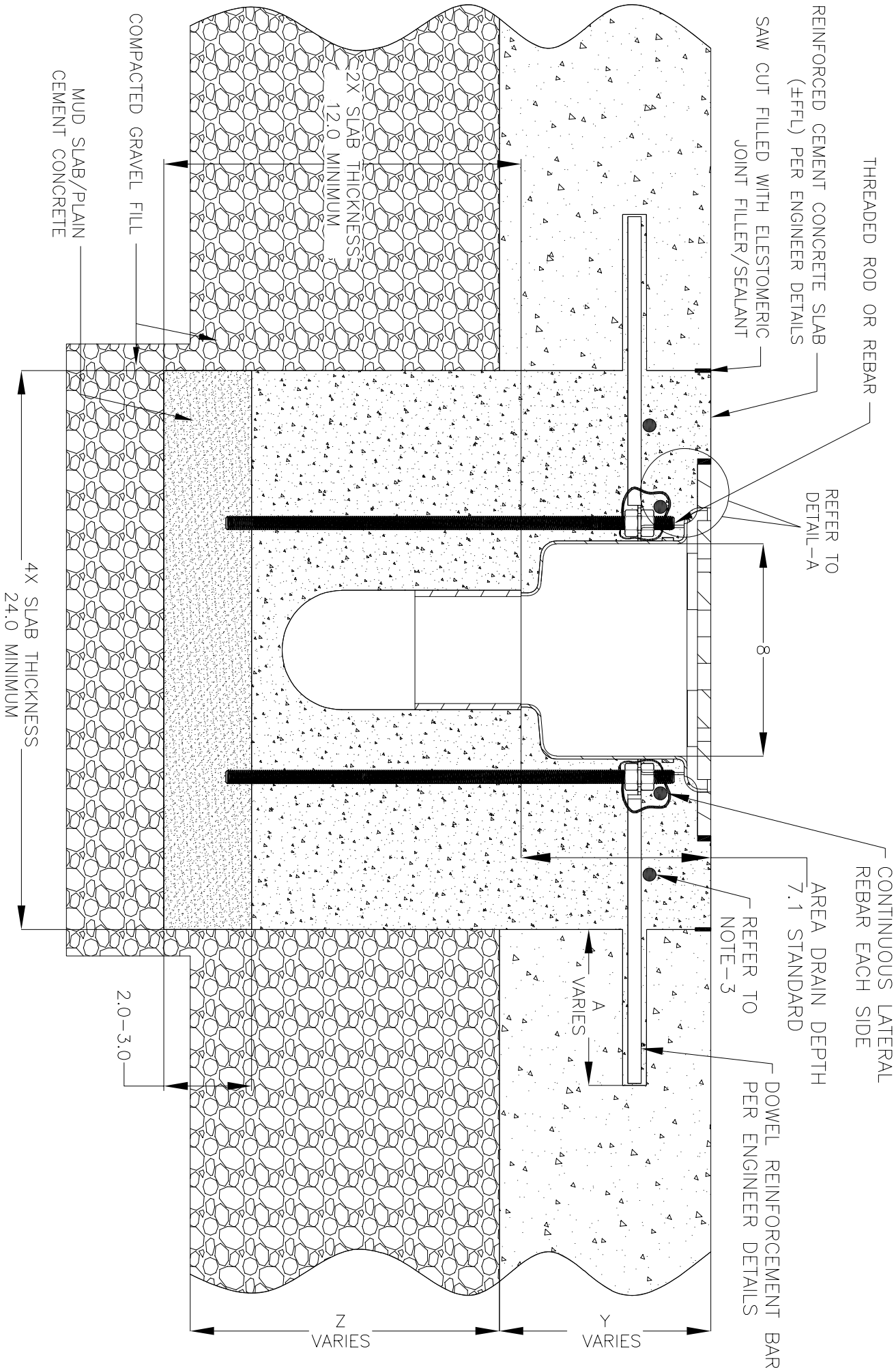
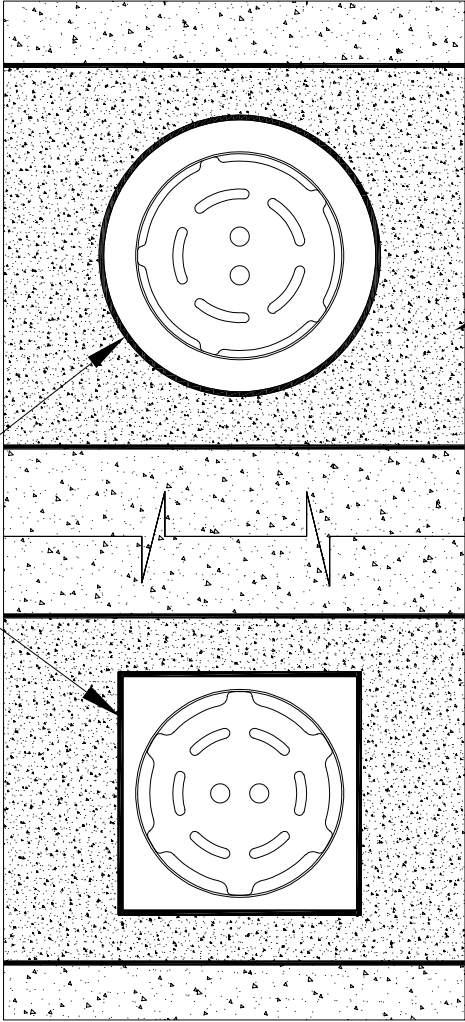


NOTES: UNLESS OTHERWISE SPECIFIED

1. ALL DIMENSIONS ARE IN INCHES.
2. AREA DRAIN BODY MATERIAL: 12GA STAINLESS STEEL T316
3. SPECIFYING ENGINEER IS RESPONSIBLE FOR CONCRETE ENCASEMENT AND REINFORCING BASED UPON APPLICATION AND LOCAL CODES.
4. REFER TO <https://info.slotdrainsystems.com/installresources> FOR INSTALLATION INSTRUCTIONS.

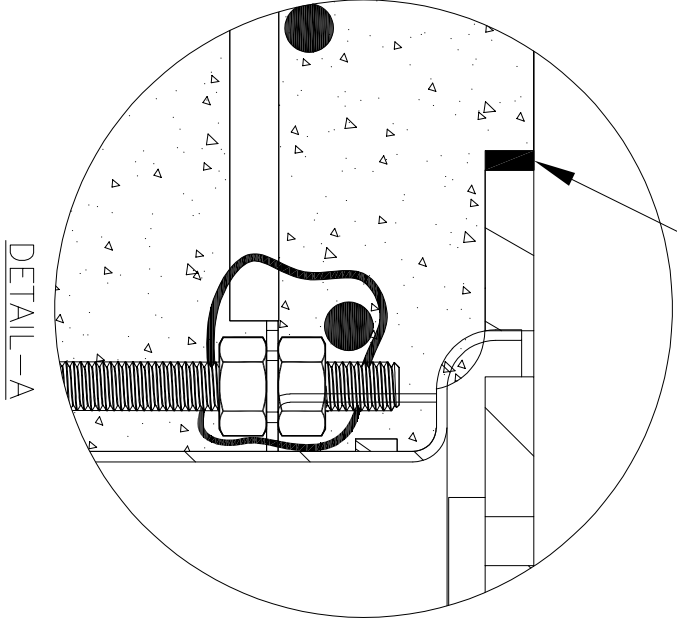


REINFORCED CEMENT CONCRETE FLOORING
(±FFL) PER ENGINEER DETAILS



PLAN VIEW

SEALANT BETWEEN
±FFL AND DRAIN TOP



DETAIL-A



FOOD SAFE ROUND AREA DRAIN INSTALLATION DETAILS

REVISIONS			DATE	BY
REV	DESCRIPTION			
0	INITIAL RELEASE - R0		4/15/2020	DK
1	UPDATED DRAWING LAYOUT & REBAR DETAILS		7/14/2021	DK
2	UPDATED WITH GLOBAL DRAIN TEMPLATE		8/21/2024	DK

ALL DRAWINGS ARE THE EXCLUSIVE PROPERTY OF SLOT DRAIN SYSTEMS. ANY REPRODUCTION IN PART OR IN WHOLE IS PROHIBITED WITHOUT PROPER CONSENT.			
DRAIN SERIES			REV.
FOOD SAFE ROUND AREA DRAIN			2
DWG NO.	SIZE	SCALE	SHEET
IN-FSAD-0100-R2	B	NTS	1 OF 1