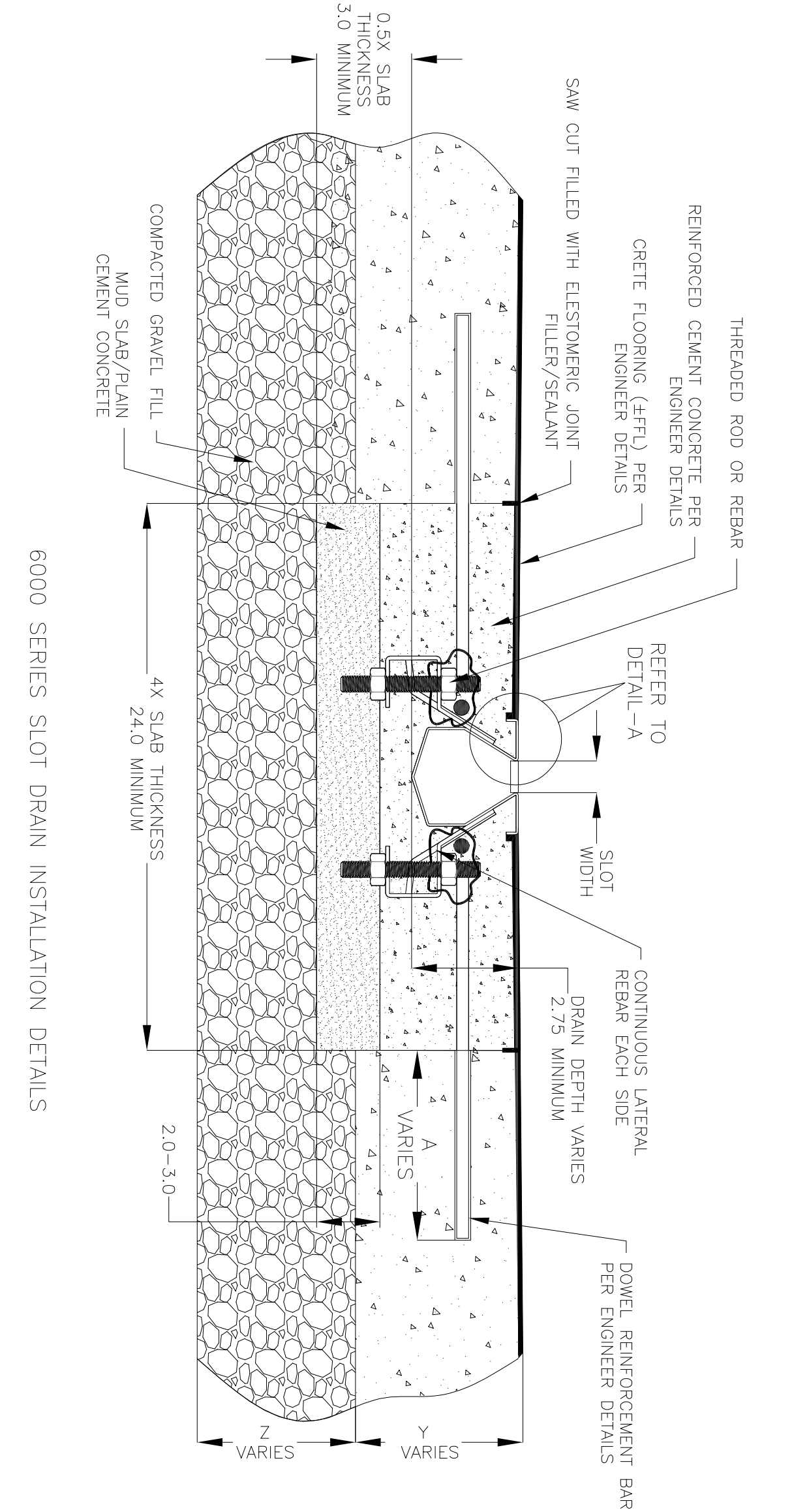


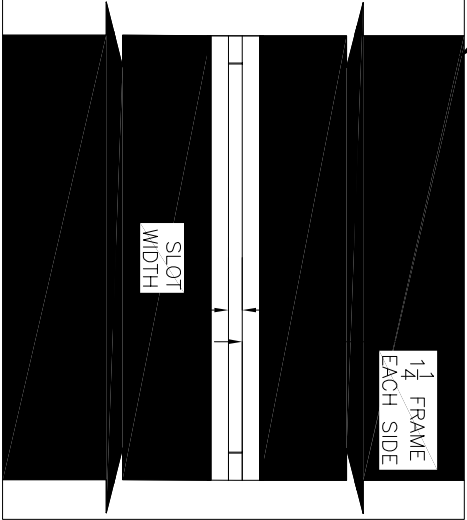
NOTES: UNLESS OTHERWISE SPECIFIED

- 1. ALL DIMENSIONS ARE IN INCHES.
- 2. DRAIN BODY MATERIAL: 16GA STAINLESS STEEL T304/T316
- 3. SPECIFYING ENGINEER IS RESPONSIBLE FOR CONCRETE ENCASEMENT AND REINFORCING BASED UPON APPLICATION AND LOCAL CODES.
- 4. REFER TO <https://info.slotdrainsystems.com/installresources> FOR INSTALLATION INSTRUCTIONS.

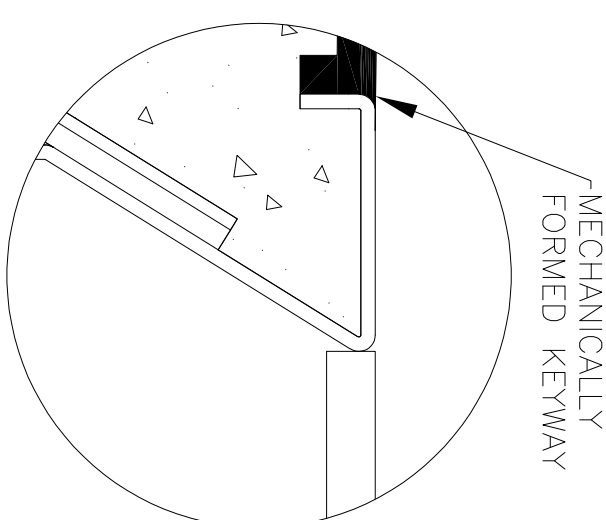


6000 SERIES SLOT DRAIN INSTALLATION DETAILS

CRETE FLOORING (\pm FFL)
PER ENGINEER DETAILS



PLAN VIEW



DETAIL-A

REVISIONS				
REV	DESCRIPTION	DATE	BY	
0	INITIAL RELEASE - RO	11/15/2019	DK	
1	UPDATED THE DRAIN LAYOUT	12/2/2020	DK	
2	UPDATED THE REBAR DETAILS	7/14/2021	DK	
3	UPDATED WITH GLOBAL DRAIN TEMPLATE	3/19/2021	DK	



DRAWING TITLE

CRETE FLOOR-RETROFIT INSTALLATION

DRAIN SERIES			REV.	
6000 SERIES SLOT DRAIN			3	
DWG NO.	SIZE	SCALE	SHEET	
IN-SD6000-100-R3	B	NTS	1 OF 1	

ALL DRAWINGS ARE THE EXCLUSIVE PROPERTY OF SLOT DRAIN SYSTEMS. ANY REPRODUCTION IN PART OR IN WHOLE IS PROHIBITED WITHOUT PROPER CONSENT.