

**SPECIFICATIONS**
**GENERAL:**

The surface drainage system shall be 1/2 inch Aluminum Slot Drain complete with slotted linear trench opening as manufactured by Global Drain Technologies.

**SLOPE:**

Neutral Slope

**FLOW RATE:**

1/2" 11 gpm (per foot of drain)

**INSTALLATION:**

The 1/2 inch Aluminum Slot Drain System shall be installed in accordance with the manufacturer's installation instructions and recommendations.

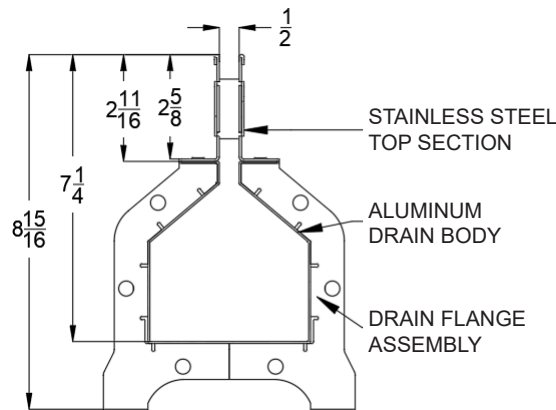
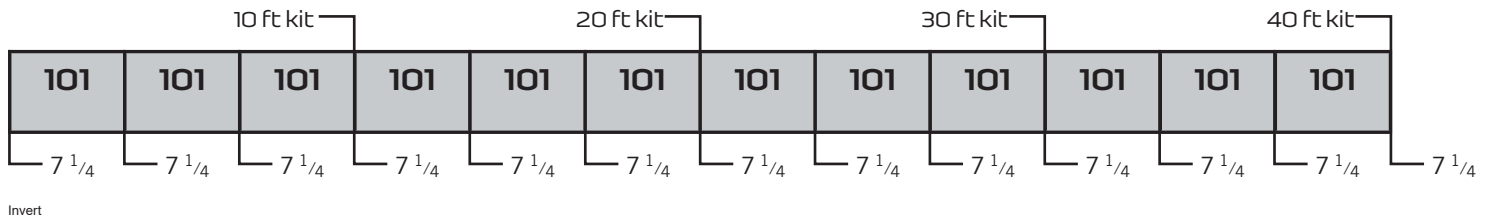
**MATERIALS:**

T304/T316 Stainless Steel Top  
 Aluminum Body

**ACCESSORIES:**

Cleaning paddle

TYPICAL MODULAR LAYOUT OF A 1/2 INCH ALUMINUM SLOT DRAIN® SYSTEM  
 (Sections fit together as illustrated below)


**DRAIN CHANNELS**

DESCRIPTION	PART NO.	INVERT SHALLOW INCHES	INVERT DEEP INCHES
1/2 INCH AL SLOT DRAIN 101	GDT00AL - 101	7 <sup>3</sup> / <sub>16</sub>	7 <sup>3</sup> / <sub>16</sub>

**PURCHASE OPTIONS**

10 FEET	101 (3 SECTIONS)	30 FEET	101 (9 SECTIONS)
20 FEET	101 (6 SECTIONS)	40 FEET	101 (12 SECTIONS)

**CATCH BASIN LID: PAN LID DESIGN AND STRAINER IS PART OF THE CATCH BASIN**

DESCRIPTION	WIDTH INCHES	LENGTH INCHES	HEIGHT INCHES	OUTLET SIZE INCHES
CATCH BASIN	7 <sup>1</sup> / <sub>8</sub>	7 <sup>1</sup> / <sub>8</sub>	8 <sup>9</sup> / <sub>16</sub>	4

SPECIFYING ENGINEER IS RESPONSIBLE FOR CONCRETE ENCASEMENT AND REINFORCING BASED UPON APPLICATION AND LOCAL CODES.  
 SLOT DRAIN SYSTEMS RESERVES THE RIGHT TO CHANGE THE PRODUCT AND SPECIFICATIONS WITHOUT NOTICE

2025