

**SPECIFICATIONS**

**GENERAL:**

The surface drainage system shall be 2000 Series Elevator Slot Drain complete with slotted linear trench opening as manufactured by Slot Drain Systems.

**LOAD CLASS:**

Load Class A

**OUTLET:**

4" SCH 40 End Bottom Outlet

**DESIGN FEATURES:**

Material: T316 Stainless Steel  
Slot Opening:  $\frac{3}{4}$ " Total ( $2 \times \frac{5}{16}$ " Heelproof)  
End: End Cap  
Thickness: 16GA  
Section Lengths: 7'9" (93")  
Custom Lengths available

**FLOW RATE:**

13 gpm (per foot of drain)  
100 gpm per 7'9" of drain length

This drain configuration complies with:

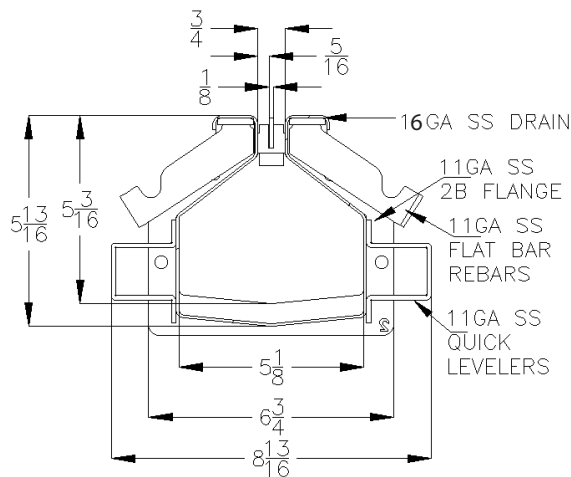
ASME A112.6.3  
NYC BC 403.6.1, BC 3007.3  
California Building Code 403.6.1, 403.6.2, 3007.4, 3008.4  
San Francisco Fire Code, Section 511.1.4

**INSTALLATION:**

The 2000 Series Elevator Slot Drain System shall be installed in accordance with the manufacturer's installation instructions and recommendations.

**NOTES:**

- Default slot opening for 93" long drain is  $\frac{3}{4}$ " with  $2 \times \frac{5}{16}$ " Slot Opening
- Modular units can be joined to increase total capacity and flow rate
- Design customization available based on the project requirements
- Heelproof insert can be raised in tile over finish (requires architect height specification)



**DRAIN CHANNELS**

DESCRIPTION	PART NO.	INVERT SHALLOW INCHES	INVERT DEEP INCHES
2000 SERIES ELEVATOR SLOT DRAIN - 7'9" SECTION	S26031-H102C93B4	5 <sup>3</sup> / <sub>16</sub>	5 <sup>13</sup> / <sub>16</sub>

SPECIFYING ENGINEER IS RESPONSIBLE FOR CONCRETE ENCASEMENT AND REINFORCING BASED UPON APPLICATION AND LOCAL CODES. SLOT DRAIN SYSTEMS RESERVES THE RIGHT TO CHANGE THE PRODUCT AND SPECIFICATIONS WITHOUT NOTICE