

**GENERAL:**

The surface drainage system shall be 2000 T-Series Elevator Threshold Drain complete with slotted linear trench opening as manufactured by Slot Drain Systems.

**LOAD CLASS:** A

**OUTLET:** 4" SCH10 Center Bottom

**SLOPE:** Neutral

**DESIGN FEATURES:**

- Material: T304, T316 Stainless Steel
- Slot Opening: 2 13/16" Total
- End: End Cap
- Thickness: 16GA
- Section Lengths: 3' (36") Minimum, 3' 6", 4'
- Custom Lengths Available
- Lockable Heel Proof Insert
- Adjustable Grate Height

**FLOW RATE:**

Flow rate dependent on grate style.  
See table below.

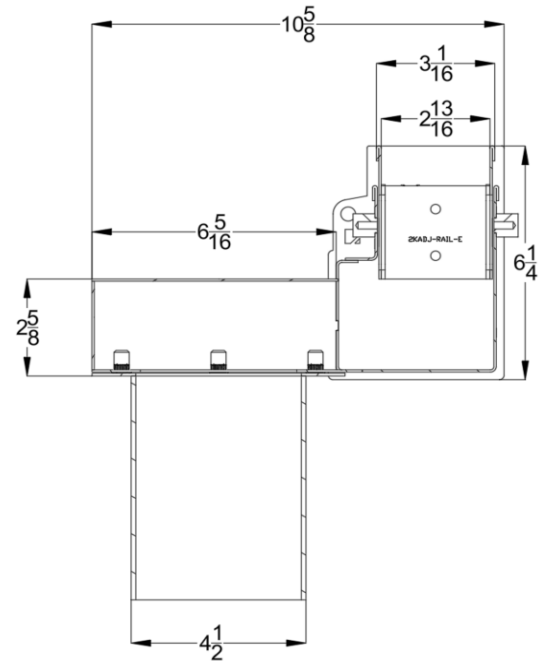
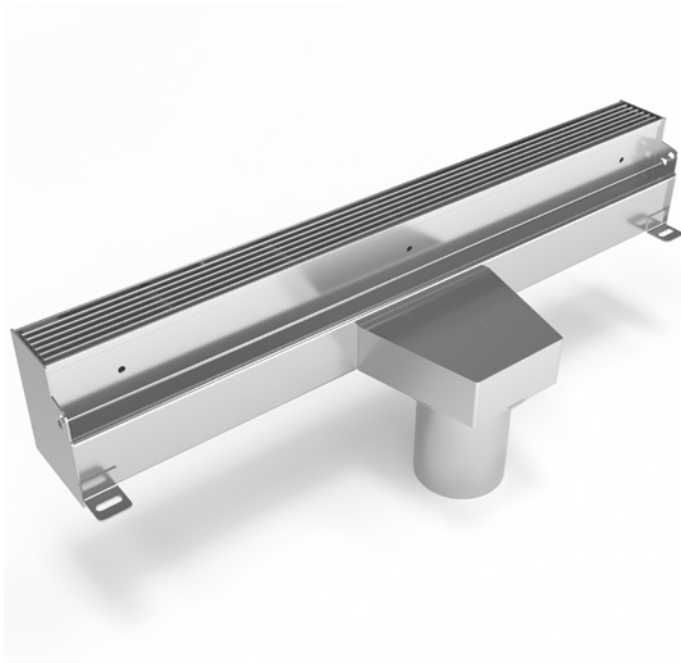
**THIS DRAIN CONFIGURATION COMPLIES WITH:**

- ASME A112.6.3/CSA B79.3
- NYC BC 403.6.1, BC 3007.3
- California Building Code 403.6.1, 403.6.2, 3007.4, 3008.4
- San Fransico Fire Code, Section 511.1.4
- IAPMO Rated

**INSTALLATION:**

The 2000 T-Series Elevator Threshold Drain shall be installed in accordance with the manufacturer's installation instructions and recommendations.

**TYPICAL PROFILE OF A 2000 T-SERIES ELEVATOR THRESHOLD DRAIN**



DRAIN CHANNELS DESCRIPTION	PART NUMBER	INVERT SHALLOW (INCHES)	INVERT DEEP (INCHES)
2000 T-SERIES ELEVATOR THRESHOLD DRAIN - 3' SECTION	SD25191T-101C36B4A	6	6
2000 T-SERIES ELEVATOR THRESHOLD DRAIN - 3'-6" SECTION	SD25191T-101C42B4A	6	6
2000 T-SERIES ELEVATOR THRESHOLD DRAIN - 4' SECTION	SD25191T-101C48B4A	6	6

GRATE OPTIONS	FLOW RATE PER FOOT OF DRAIN	FLOW RATE PER 3' OF DRAIN
BAR	38 gpm	100 gpm
ANGLE	38 gpm	100 gpm
WEAVE	38 gpm	100 gpm
FLOW	20 gpm	60 gpm

NOTE: Default slot opening for 36" long drain is 2 13/16". Length customizations available based on project requirements. Default end caps welded to drain body. Color options available. Neutral Drain System.

Specifying engineer is responsible for concrete encasement and reinforcing based upon application and local codes. Global Drain Technologies reserves the right to change the product and specifications without notice.